

F

E

D

C

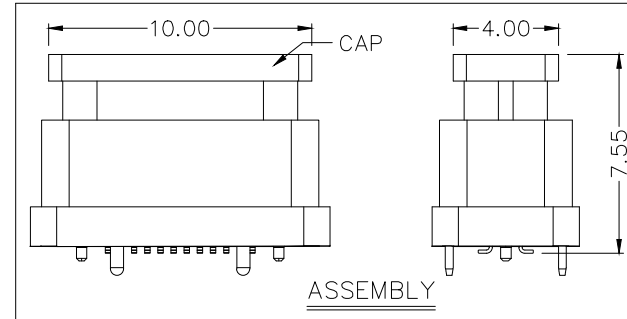
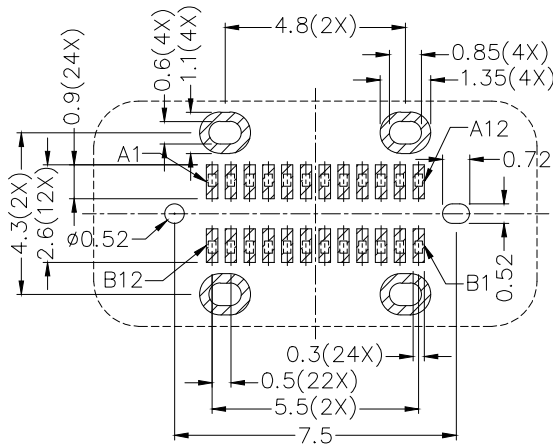
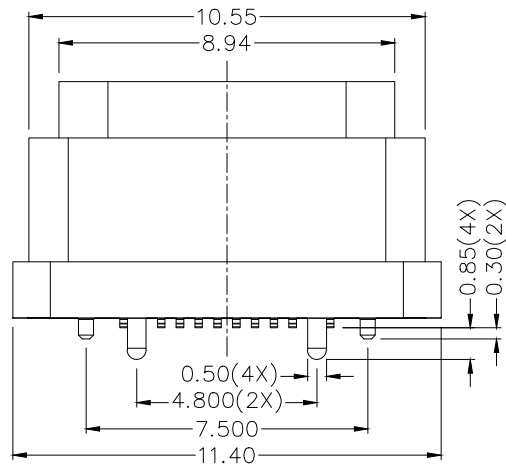
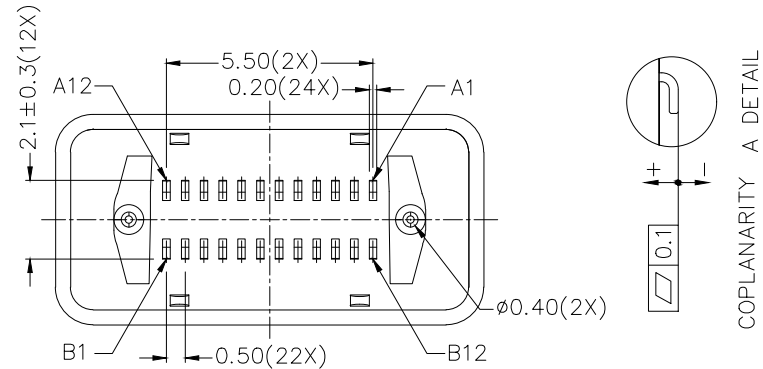
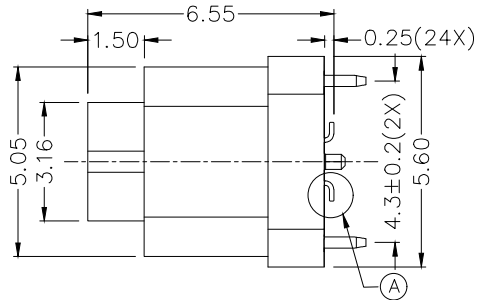
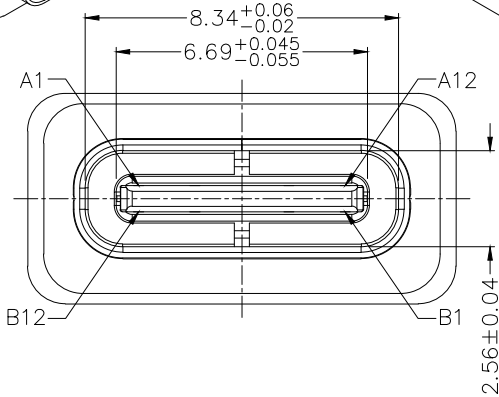
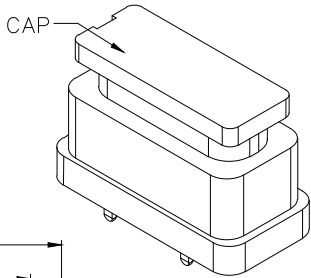
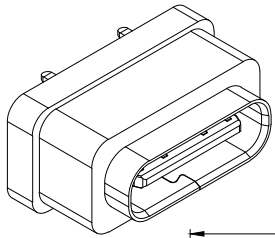
B

A

| ZONE | SYMBOL | REVISION | APPROVAL | DATE |
|------|--------|-----------------------------|----------|----------|
| | | ADD ASSEMBLY O-RING DIAGRAM | H.Q.ZHOU | 5-1-2024 |
| | | | | |
| | | | | |



RoHS
Compliant



PIN ASSIGNMENT (FRONT VIEW)

| | | | | | | | | | | | | |
|---------|-----|------|------|------|------|----|----|------|------|------|------|-----|
| PIN NO. | A1 | A2 | A3 | A4 | A5 | A6 | A7 | A8 | A9 | A10 | A11 | A12 |
| | GND | TX1+ | TX1- | Vbus | CC1 | D+ | D- | SBU1 | Vbus | RX2- | RX2+ | GND |
| PIN NO. | B12 | B11 | B10 | B9 | B8 | B7 | B6 | B5 | B4 | B3 | B2 | B1 |
| | GND | RX1+ | RX1- | Vbus | SBU2 | D- | D+ | CC2 | Vbus | TX2- | TX2+ | GND |

RECOMMENDED PCB LAYOUT
TOLERANCE: ±0.05
(TOP VIEW)

| DESCRIPTION | MATERIAL | PLATING |
|--------------|--------------------|--|
| CONTACT | COPPER ALLOY | NICKEL PLATED ON ALL AREA, Au 3U" MIN ON CONTACT AREA, GOLD FLASH ON SOLDER AREA |
| SHELL | STAINLESS STEEL | NICKEL(Ni) |
| EMI PLATE | STAINLESS STEEL | NICKEL(Ni) |
| MIDDLE PLATE | STAINLESS STEEL | |
| INSULATOR | HIGH TEMP. PLASTIC | COLOR:BLACK |
| HOUSING | HIGH TEMP. PLASTIC | COLOR:BLACK |
| CAP | HIGH TEMP. PLASTIC | COLOR:BLACK |



LINKPLEX TECHNOLOGY LIMITED

| | | | | | |
|-----------|---|----------------------|------------------------|-------|----|
| PART NAME | WATERPROOF USB 3.2 TYPE-C (24PIN) CONNECTOR | TOLERANCE UNLESS | 0.0±0.3 | UNIT: | mm |
| PART NO. | LWP-C110D | OTHERWISE SPECIFIED: | 0.00±0.2 0.000±0.15 | | |

| | | | | | |
|----------|----------|------|-----------|----------|------------------|
| DESIGN | H.L.TAN | DATE | 13-3-2023 | SCALE | 5:1 |
| DRAWING | J.H.ZHOU | DATE | 5-1-2024 | MATERIAL | |
| CHECK | T.Y.LI | DATE | 5-1-2024 | DWG. NO. | TZ\WPC110D-A/2.0 |
| APPROVAL | H.Q.ZHOU | DATE | 5-1-2024 | SHEET | 1/2 |

F

E

D

C

B

A

F

E

D

C

B

A

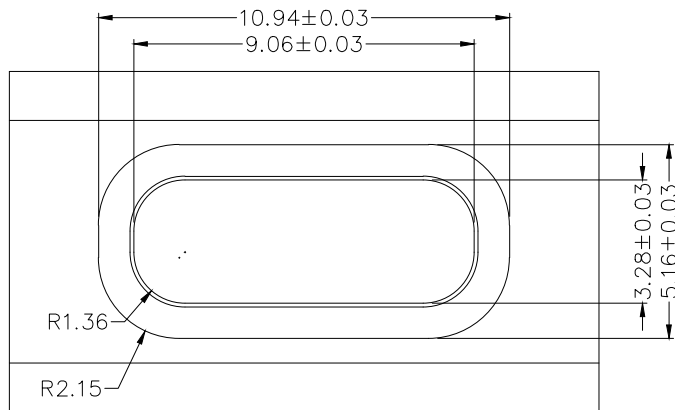
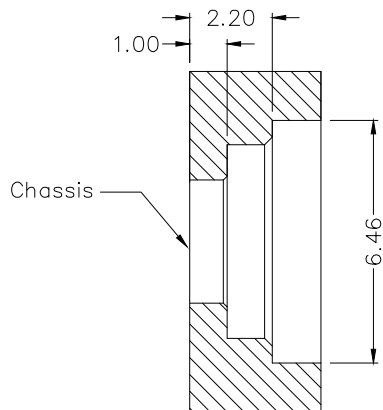


RoHS
Compliant

| ZONE | SYMBOL | REVISION | APPROVAL | DATE |
|------|--------|----------|----------|------|
| | | | | |
| | | | | |
| | | | | |

1

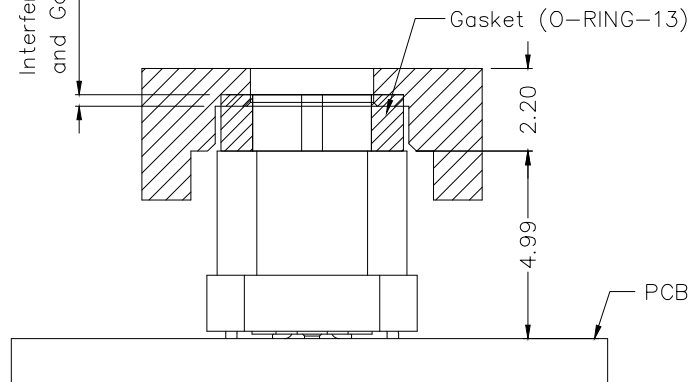
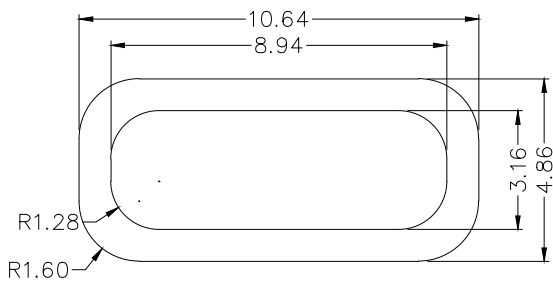
1



Interference gap between chassis and Gasket is 0.3 min

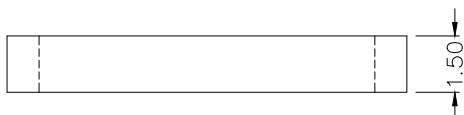
2

2



3

3



* Recommended Waterproof Gasket
Gasket Part No.: O-RING-13

Assembly method

4

4

LINKPLEX TECHNOLOGY LIMITED

| | | | | | |
|----------|----------|------|-----------|----------|------------------|
| DESIGN | H.L.TAN | DATE | 13-3-2023 | SCALE | 5:1 |
| DRAWING | J.H.ZHOU | DATE | 5-1-2024 | MATERIAL | |
| CHECK | T.Y.LI | DATE | 5-1-2024 | DWG. NO. | TZ\WPC110D-A/2.0 |
| APPROVAL | H.Q.ZHOU | DATE | 5-1-2024 | SHEET | 2/2 |

| | | | | | |
|-----------|---|----------------------|------------------------|-------|--|
| PART NAME | WATERPROOF USB 3.2 TYPE-C (24PIN) CONNECTOR | TOLERANCE UNLESS | 0.0±0.3 | UNIT: | |
| PART NO. | LWP-C110D | OTHERWISE SPECIFIED: | 0.00±0.2 0.000±0.15 | mm | |

F

E

D

C

B

A