

F

E

D

C

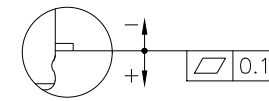
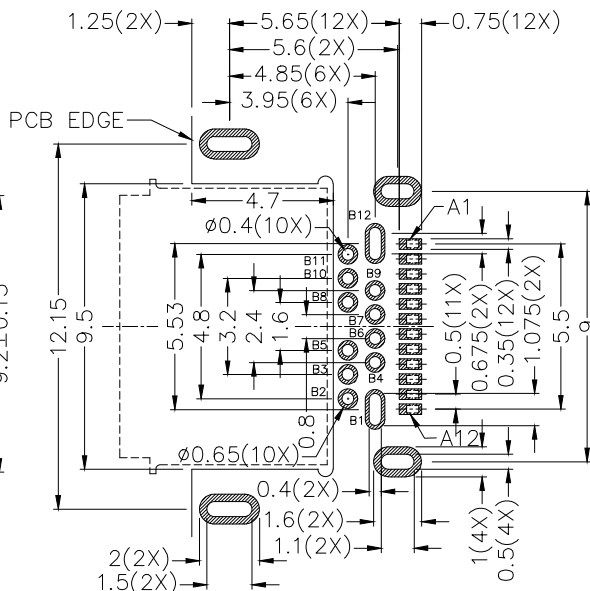
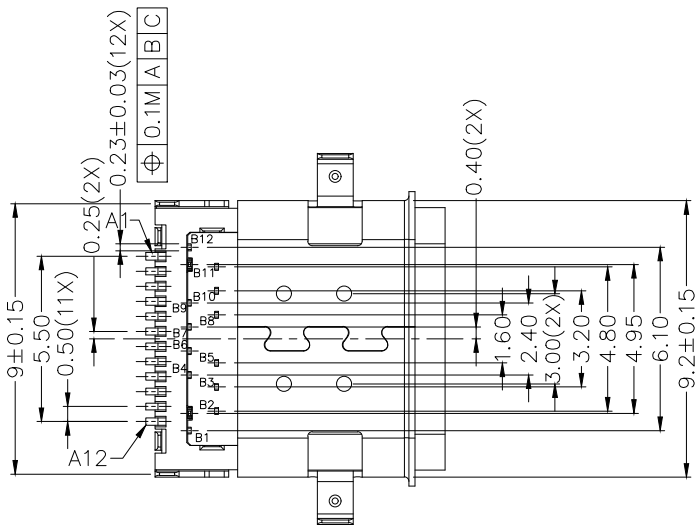
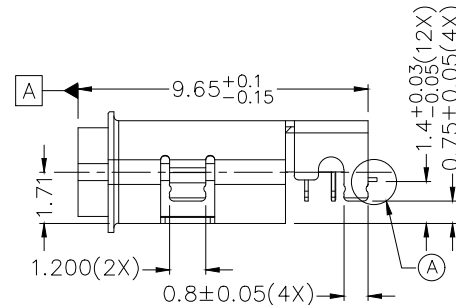
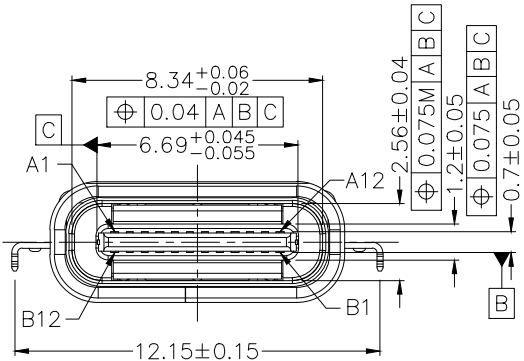
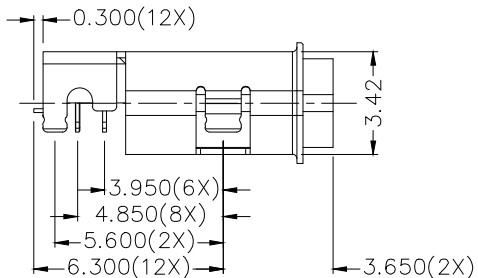
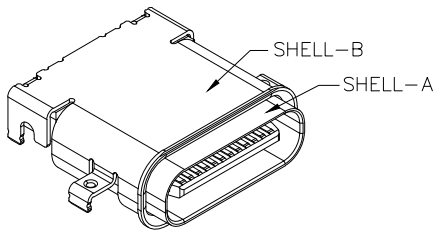
B

A

| ZONE | SYMBOL | REVISION | APPROVAL | DATE |
|------|--------|-----------------------------|----------|----------|
| | | ADD ASSEMBLY O-RING DIAGRAM | H.Q.ZHOU | 5-1-2024 |
| | | | | |



RoHS
Compliant



A DETAIL COPLANARITY

PIN ASSIGNMENT (FRONT VIEW)

| | | | | | | | | | | | | |
|---------|-----|------|------|------|------|----|----|------|------|------|------|-----|
| PIN NO. | A1 | A2 | A3 | A4 | A5 | A6 | A7 | A8 | A9 | A10 | A11 | A12 |
| | GND | TX1+ | TX1- | Vbus | CC1 | D+ | D- | SBU1 | Vbus | RX2- | RX2+ | GND |
| PIN NO. | B12 | B11 | B10 | B9 | B8 | B7 | B6 | B5 | B4 | B3 | B2 | B1 |
| | GND | RX1+ | RX1- | Vbus | SBU2 | D- | D+ | CC2 | Vbus | TX2- | TX2+ | GND |

RECOMMENDED PCB LAYOUT
TOLERANCE: ±0.05
(TOP VIEW)

| DESCRIPTION | MATERIAL | PLATING |
|--------------------------|--------------------|---|
| TERMINAL-A | COPPER ALLOY | NICKEL PLATED ON ALL AREA, Au 15u" MIN ON CONTACT AREA, Au 1u" MIN ON SOLDER AREA |
| TERMINAL-B | COPPER ALLOY | NICKEL PLATED ON ALL AREA, Au 15u" MIN ON CONTACT AREA, Au 1u" MIN ON SOLDER AREA |
| SHELL-A | STAINLESS STEEL | NICKEL(Ni) |
| SHELL-B | STAINLESS STEEL | NICKEL(Ni) |
| INNER GROUND COVER SHELL | STAINLESS STEEL | |
| MIDDLE PLATE | STAINLESS STEEL | |
| INSULATOR | HIGH TEMP. PLASTIC | COLOR:BLACK |

LINKPLEX TECHNOLOGY LIMITED

| | | | | | |
|----------|----------|------|-----------|----------|------------------|
| DESIGN | H.L.TAN | DATE | 25-7-2021 | SCALE | 4:1 |
| DRAWING | J.H.ZHOU | DATE | 5-1-2024 | MATERIAL | |
| CHECK | T.Y.LI | DATE | 5-1-2024 | DWG. NO. | TZ\WPC109D-A/2.0 |
| APPROVAL | H.Q.ZHOU | DATE | 5-1-2024 | SHEET | 1/2 |

PART NAME WATERPROOF USB 3.2 TYPE-C (24 PIN) CONNECTOR
PART NO. LWP-C109D

TOLERANCE UNLESS OTHERWISE SPECIFIED:
0.0±0.3
0.00±0.25
0.000±0.1

UNIT: mm



F

E

D

C

B

A

F

E

D

C

B

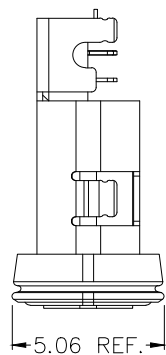
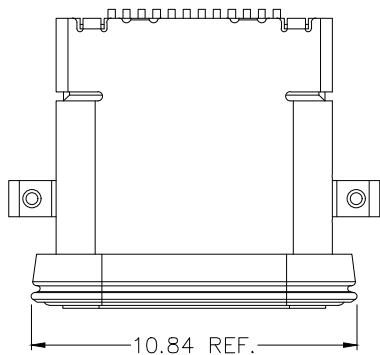
A



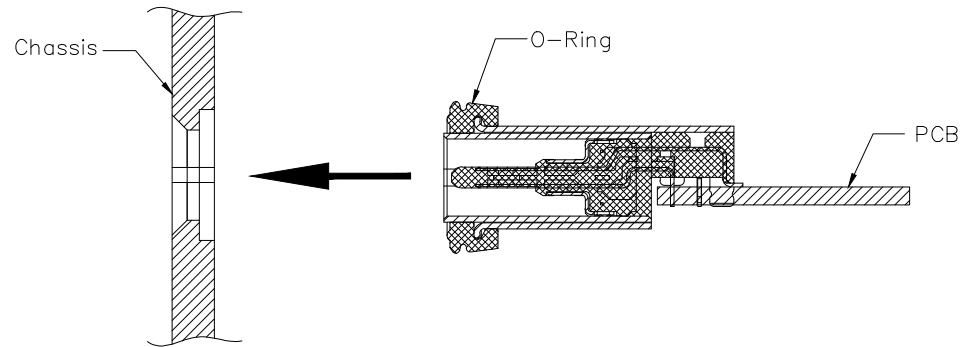
RoHS
Compliant

| ZONE | SYMBOL | REVISION | APPROVAL | DATE |
|------|--------|----------|----------|------|
| | | | | |
| | | | | |
| | | | | |

1



Assembly diagram



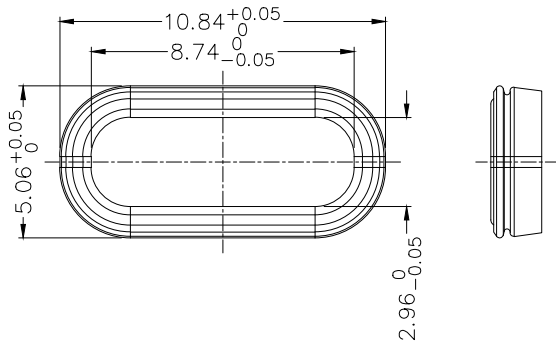
Assembly method

2

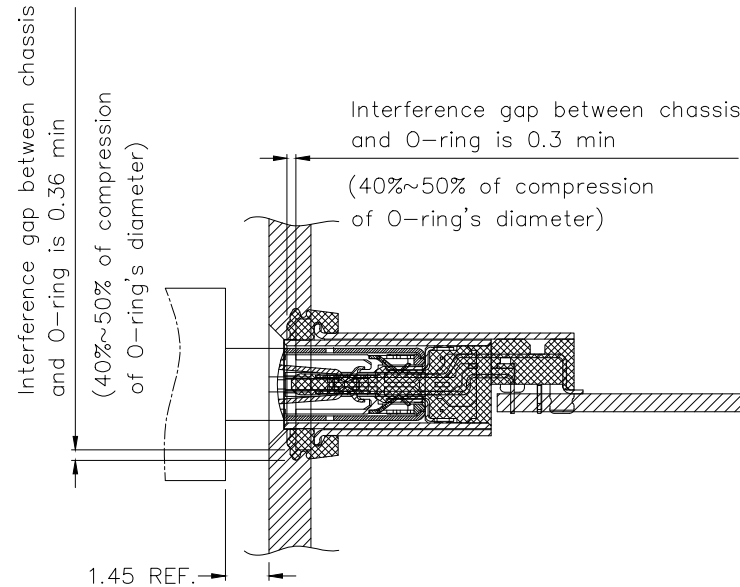
2

3

3



O-ring size
(uncompressed)



After assembling on chassis

4

4



LINKPLEX TECHNOLOGY LIMITED

| | | | | | | | | | | | | | | | | | |
|-----------|--|--|--|----------------------|--|-----------|--|-------|--|----------|--|----------|---------|----------|-----------|-------|------------------|
| PART NAME | | WATERPROOF USB 3.2 TYPE-C (24 PIN) CONNECTOR | | TOLERANCE UNLESS | | 0.0±0.3 | | UNIT: | | mm | | DESIGN | H.L.TAN | DATE | 25-7-2021 | SCALE | 4:1 |
| PART NO. | | LWP-C109D | | OTHERWISE SPECIFIED: | | 0.00±0.25 | | mm | | CHECK | | T.Y.LI | DATE | 5-1-2024 | MATERIAL | | |
| | | | | | | 0.000±0.1 | | | | APPROVAL | | H.Q.ZHOU | DATE | 5-1-2024 | DWG. NO. | | TZ\WPC109D-A/2.0 |
| | | | | | | | | | | | | | | | SHEET | | 2/2 |

F

E

D

C

B

A