

F

E

D

C

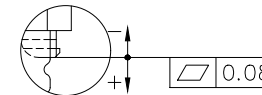
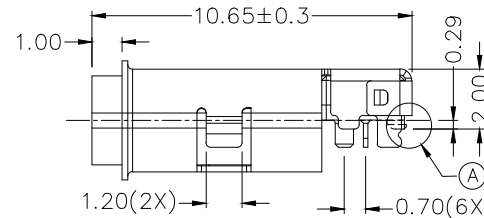
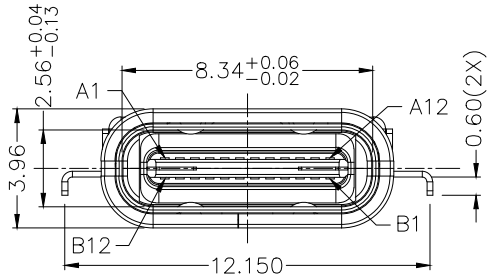
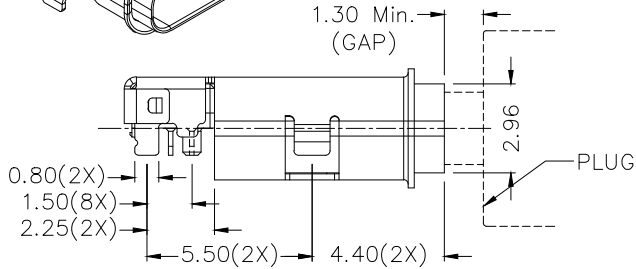
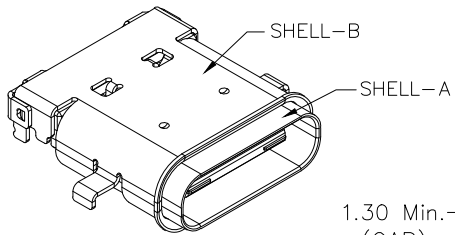
B

A

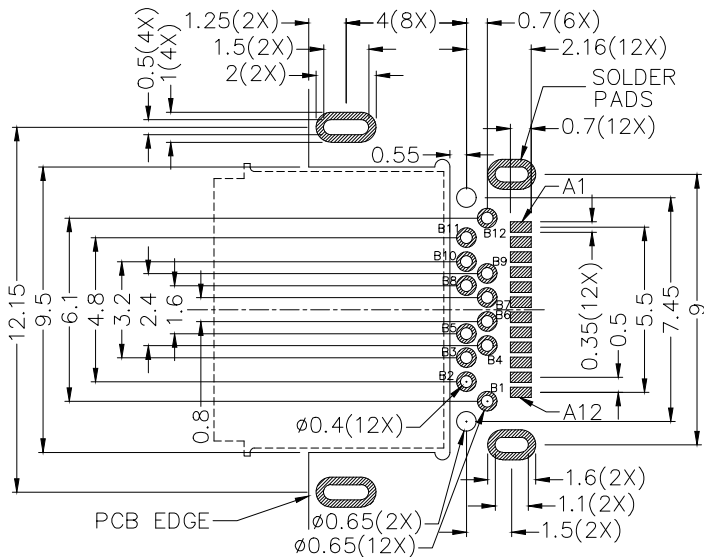
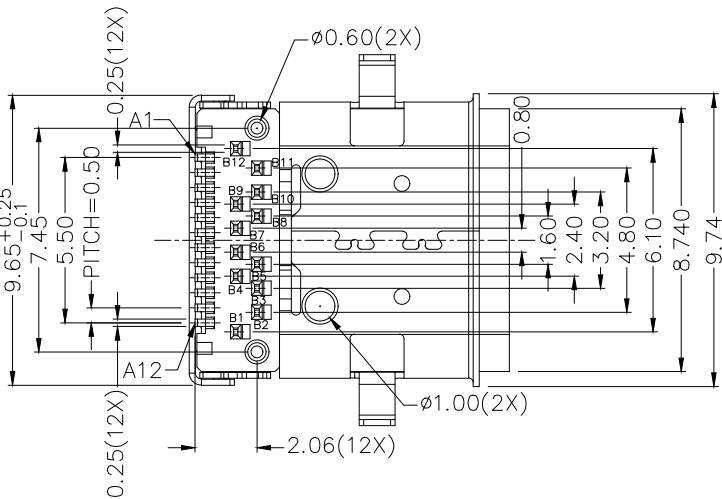


RoHS Compliant

ZONE	SYMBOL	REVISION	APPROVAL	DATE
		ADD ASSEMBLY O-RING DIAGRAM	H.Q.ZHOU	5-1-2024



A DETAIL COPLANARITY



RECOMMENDED PCB LAYOUT TOLERANCE: ±0.05 (TOP VIEW)

PIN ASSIGNMENT (FRONT VIEW)

PIN NO.	A1	A2	A3	A4	A5	A6	A7	A8	A9	A10	A11	A12
	GND	TX1+	TX1-	Vbus	CC1	D+	D-	SBU1	Vbus	RX2-	RX2+	GND
PIN NO.	B12	B11	B10	B9	B8	B7	B6	B5	B4	B3	B2	B1
	GND	RX1+	RX1-	Vbus	SBU2	D-	D+	CC2	Vbus	TX2-	TX2+	GND

DESCRIPTION	MATERIAL	PLATING
CONTACT	COPPER ALLOY	NICKEL PLATED ON ALL AREA, GOLD FLASH ON CONTACT AREA, Sn 80u" MIN ON SOLDER AREA
SHELL-A	STAINLESS STEEL	
SHELL-B	STAINLESS STEEL	NICKEL(Ni)
INNER GROUND COVER SHELL	STAINLESS STEEL	
MIDDLE PLATE	STAINLESS STEEL	
INSULATOR	HIGH TEMP. PLASTIC	COLOR:BLACK

**LINKPLEX TECHNOLOGY LIMITED**

PART NAME WATERPROOF USB 3.2 TYPE-C (24 PIN) CONNECTOR  
PART NO. LWP-C103D

TOLERANCE UNLESS 0.0±0.3  
0.00±0.2  
OTHERWISE SPECIFIED: 0.000±0.1

UNIT: mm

DESIGN	H.L.TAN	DATE	3-1-2019	SCALE	4:1
DRAWING	J.Q.ZHOU	DATE	5-1-2024	MATERIAL	
CHECK	T.Y.LI	DATE	5-1-2024	DWG. NO.	TZ\WPC103D-A/2.0
APPROVAL	H.Q.ZHOU	DATE	5-1-2024	SHEET	1/2

F

E

D

C

B

A

F

E

D

C

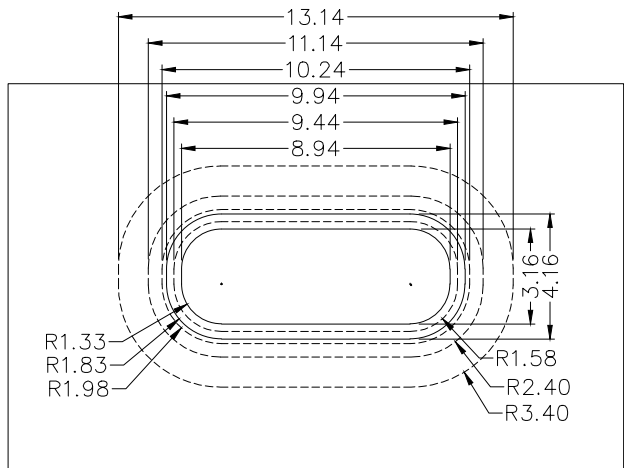
B

A

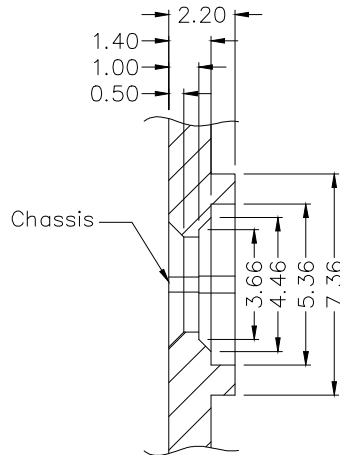


RoHS Compliant

ZONE	SYMBOL	REVISION	APPROVAL	DATE



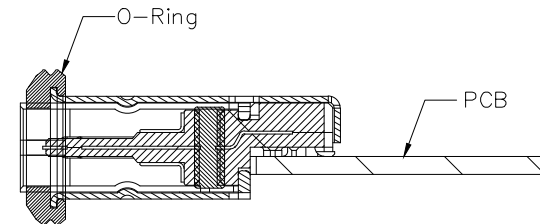
Top View



Chassis



Assembly method



1

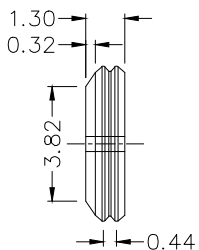
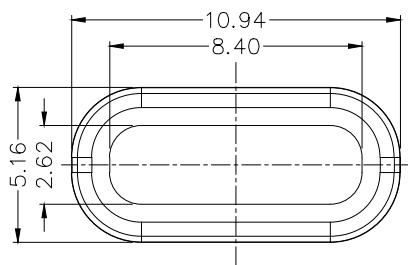
1

2

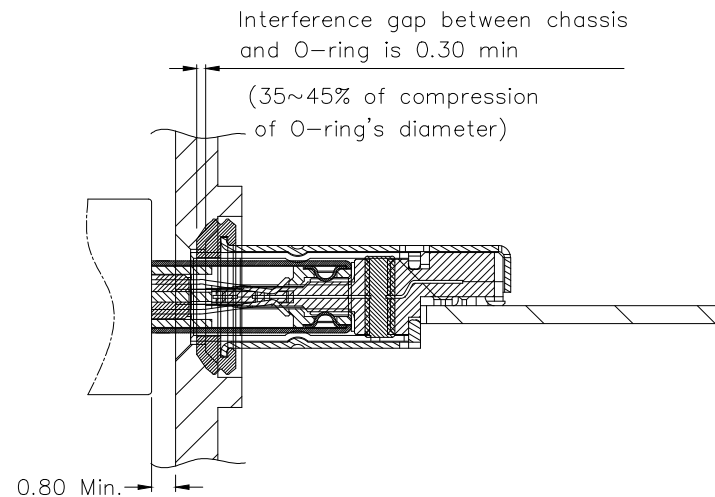
2

3

3



O-ring size (uncompressed)



After assembling on chassis

4

4



LINKPLEX TECHNOLOGY LIMITED

DESIGN	H.L.TAN	DATE	3-1-2019	SCALE	4:1
DRAWING	J.Q.ZHOU	DATE	5-1-2024	MATERIAL	
CHECK	T.Y.LI	DATE	5-1-2024	DWG. NO.	TZ\WPC103D-A/2.0
APPROVAL	H.Q.ZHOU	DATE	5-1-2024	SHEET	2/2

PART NAME WATERPROOF USB 3.2 TYPE-C (24 PIN) CONNECTOR

TOLERANCE UNLESS 0.0±0.3

UNIT: mm



PART NO. LWP-C103D

OTHERWISE SPECIFIED: 0.00±0.2, 0.000±0.1

F

E

D

C

B

A