

F

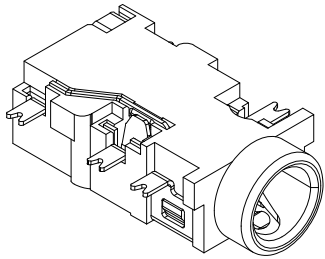
E

D

C

B

A

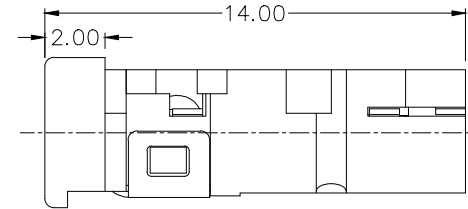
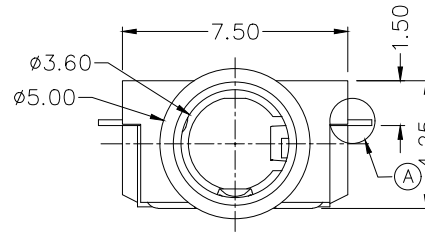
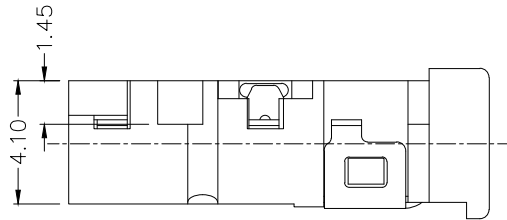


RoHS
Compliant

ZONE	SYMBOL	REVISION	APPROVAL	DATE
B4		DIM. ADDED	H.Q.ZHOU	13-12-2023
E2		UPDATE SIZE	H.Q.ZHOU	13-12-2023

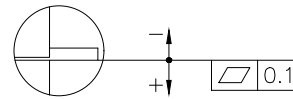
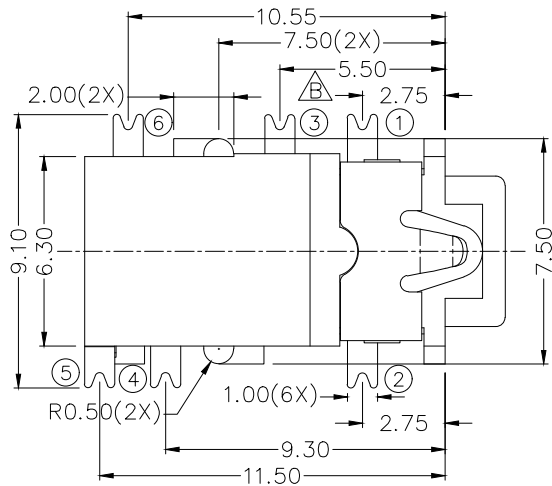
1

1



2

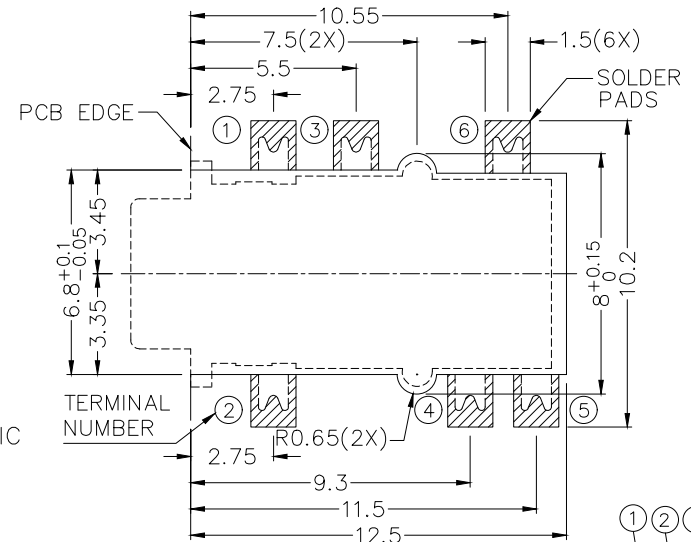
2



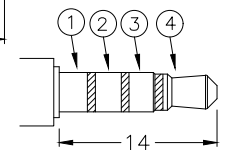
A DETAIL COPLANARITY

*** MATERIAL**

- TERMINAL 1 : COPPER ALLOY
- TERMINAL 2 : COPPER ALLOY
- TERMINAL 3 : COPPER ALLOY
- TERMINAL 4 : COPPER ALLOY
- TERMINAL 5 : COPPER ALLOY
- TERMINAL 6 : COPPER ALLOY
- HOUSING : HIGH TEMP. PLASTIC



RECOMMENDED PCB LAYOUT
TOLERANCE: ±0.05
(TOP VIEW)



RECOMMENDED
ø3.5 MATING PLUG

3

3

4

4

MODEL NO.	LSH-5186D
SCHEMATIC	



LINKPLEX TECHNOLOGY LIMITED

PART NAME	3.5mm SMD AUDIO JACK	TOLERANCE UNLESS 0±0.5 0.0±0.3 OTHERWISE SPECIFIED: 0.00±0.2	UNIT: mm	DESIGN	T.Y.LI	DATE	10-7-2009	SCALE	4:1
				DRAWING	J.H.ZHOU	DATE	13-12-2023	MATERIAL	*
PART NO.	LSH-518D			CHECK	H.L.TAN	DATE	13-12-2023	DWG. NO.	TZ\SH518D-A/1.1
				APPROVAL	H.Q.ZHOU	DATE	13-12-2023	SHEET	1/1

F

E

D

C

B

A