

F

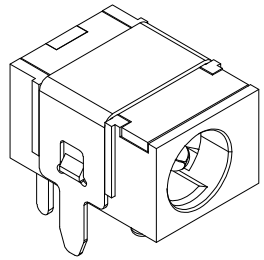
E

D

C

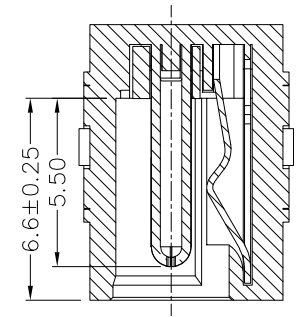
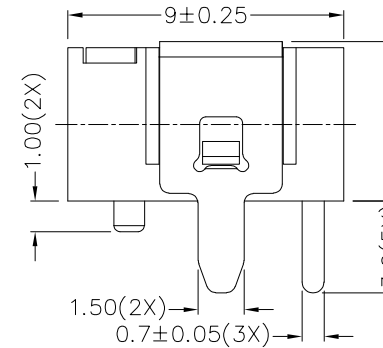
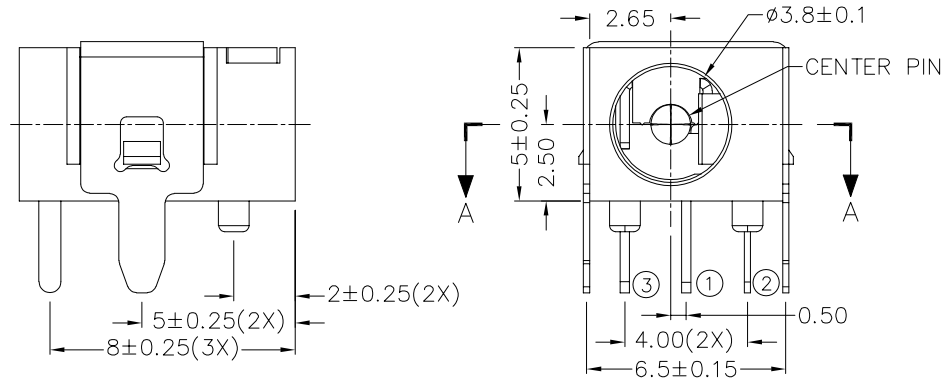
B

A

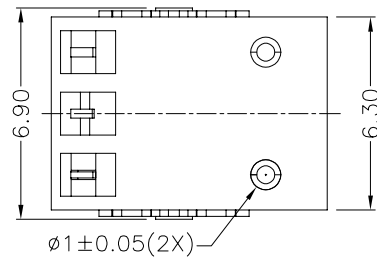


RoHS  
Compliant

ZONE	SYMBOL	REVISION	APPROVAL	DATE
		CANCEL CENTER PIN $\phi 1.0$	H.Q.ZHOU	3-5-2026



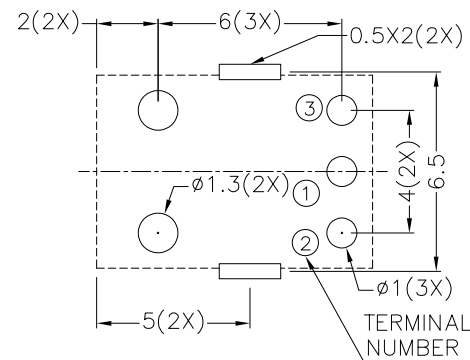
SECTION A-A



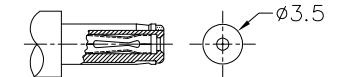
## \* MATERIAL

TERMINAL 1 : BRASS  
 TERMINAL 2 : COPPER ALLOY  
 TERMINAL 3 : BRASS  
 SHIELD : BRASS  
 HOUSING : HIGH TEMP. PLASTIC  
 COVER : HIGH TEMP. PLASTIC

MODEL NO.	LDC-136
SCHEMATIC	
CENTER PIN	$\phi 1.30 \pm 0.04\text{mm}$



RECOMMENDED PCB LAYOUT  
 TOLERANCE:  $\pm 0.05$   
 (TOP VIEW)



RECOMMENDED  
 DC MATING PLUG



LINKPLEX TECHNOLOGY LIMITED

PART NAME	DC POWER SOCKET	TOLERANCE UNLESS	$0 \pm 0.5$	UNIT:		DESIGN	G.P.YI	DATE	10-3-2016	SCALE	4:1
PART NO.	LDC-136	OTHERWISE SPECIFIED:	$0.0 \pm 0.3$ $0.00 \pm 0.2$	mm		DRAWING	J.H.ZHOU	DATE	3-5-2026	MATERIAL	*
						CHECK	T.Y.LI	DATE	3-5-2026	DWG. NO.	TZ\DC136-A/1.1
						APPROVAL	H.Q.ZHOU	DATE	3-5-2026	SHEET	1/1

F

E

D

C

B

A