

F

E

D

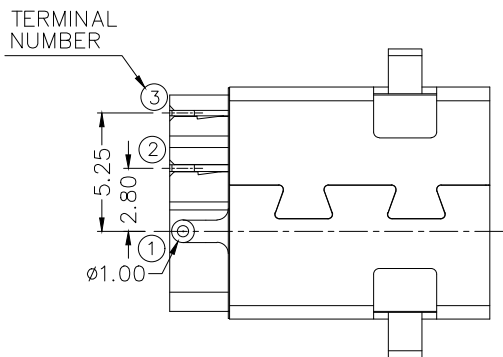
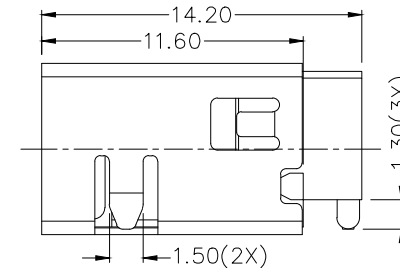
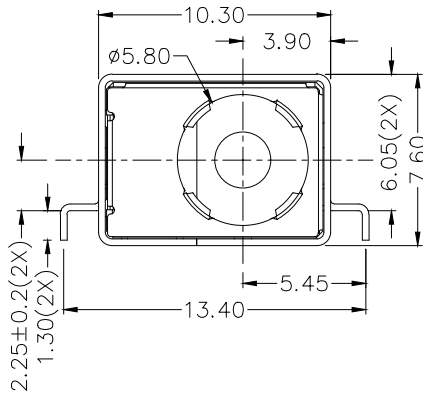
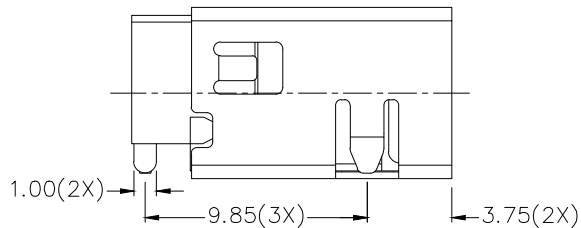
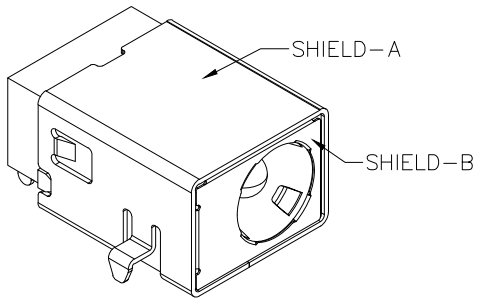
C

B

A

ZONE	SYMBOL	REVISION	APPROVAL	DATE

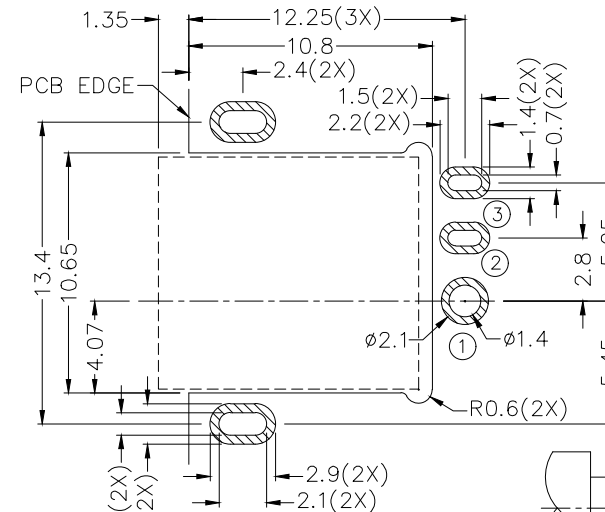
**RoHS**  
Compliant



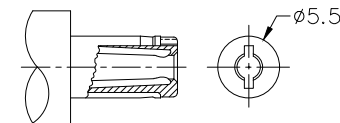
**\* MATERIAL**

- TERMINAL 1 : BRASS
- TERMINAL 2 : BRASS
- TERMINAL 3 : COPPER ALLOY
- SHIELD-A : BRASS
- SHIELD-B : STAINLESS STEEL
- HOUSING : HIGH TEMP. PLASTIC
- COVER : HIGH TEMP. PLASTIC

MODEL NO.	LDC-124HS
SCHEMATIC	
CENTER PIN	$\phi 1.65^{+0}_{-0.05} \text{mm}$
	$\phi 2^{+0}_{-0.05} \text{mm}$
	$\phi 2.5^{+0}_{-0.05} \text{mm}$



RECOMMENDED PCB LAYOUT  
TOLERANCE: ±0.05  
(TOP VIEW)



RECOMMENDED  
DC MATING PLUG



**LINKPLEX TECHNOLOGY LIMITED**

PART NAME	HIGH CURRENT DC POWER SOCKET	TOLERANCE UNLESS	0±0.5 0.0±0.3	UNIT:	
PART NO.	LDC-124HS	OTHERWISE SPECIFIED:	0.00±0.25		

DESIGN	G.P.YI	DATE	25-6-2023	SCALE	3:1
DRAWING	H.Q.ZHOU	DATE	25-6-2023	MATERIAL	*
CHECK	H.L.TAN	DATE	25-6-2023	DWG. NO.	TZ\DC124HS-A/1.0
APPROVAL		DATE	25-6-2023	SHEET	1/1

F

E

D

C

B

A