

F

E

D

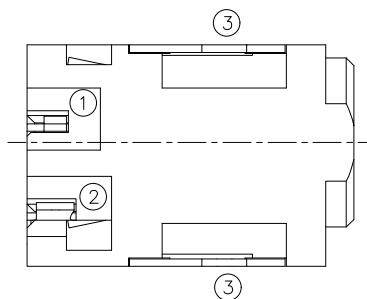
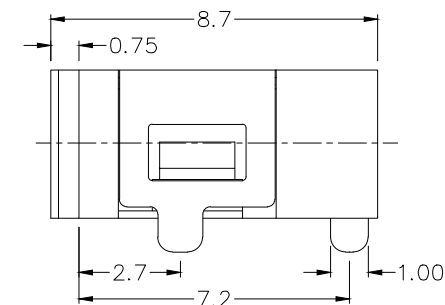
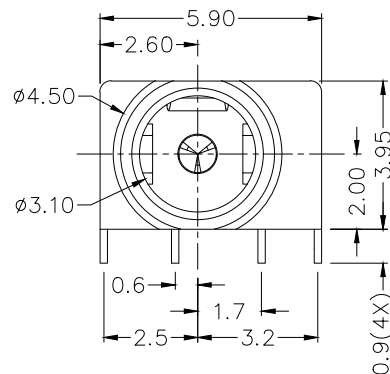
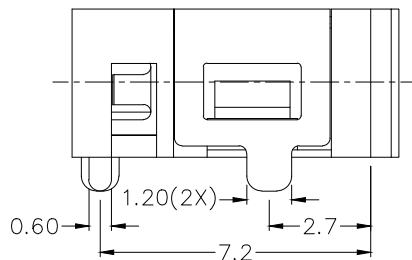
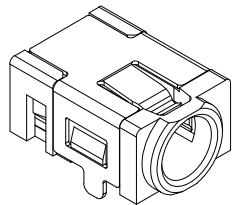
C

B

A

RoHS
Compliant

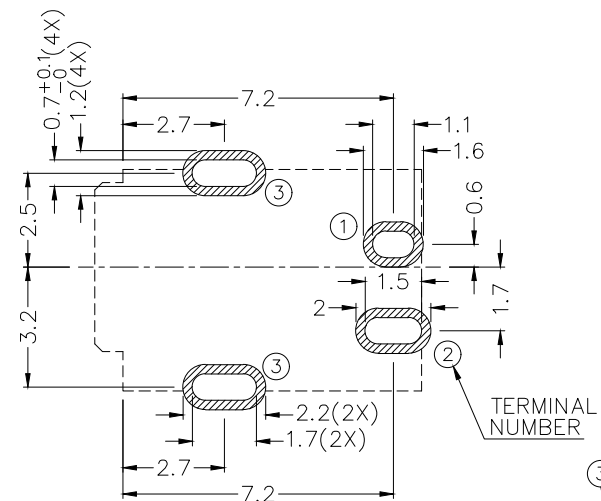
ZONE	SYMBOL	REVISION	APPROVAL	DATE
		ADJUST THE RECOMMENDED DC	J.X.KUANG	8-10-2019
		MATING PLUG		



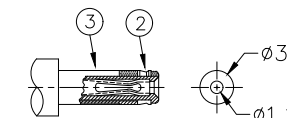
* MATERIAL

TERMINAL 1 : BRASS
TERMINAL 2 : COPPER ALLOY
TERMINAL 3 : COPPER ALLOY
HOUSING : HIGH TEMP. PLASTIC

MODEL NO.	LDC-115H
SCHMATIC	
CENTER PIN	ø1.000mm



RECOMMENDED PCB LAYOUT
TOLERANCE: ±0.05
(TOP VIEW)



RECOMMENDED
DC MATING PLUG



LINKPLEX TECHNOLOGY LIMITED

DESIGN	H.L.TAN	DATE	13-12-2017	SCALE	5:1
DRAWING	H.Q.ZHOU	DATE	8-10-2019	MATERIAL	*
CHECK	T.Y.LI	DATE	8-10-2019	DWG. NO.	TZ\DC115H-A/1.0
APPROVAL		DATE	8-10-2019	SHEET	1/1
PART NAME	HIGH CURRENT DC POWER SOCKET	TOLERANCE UNLESS	0.0±0.2		
PART NO.	LDC-115H	OTHERWISE SPECIFIED:	0.00±0.1 0.000±0.05	UNIT:	

F

E

D

C

B

A