

F

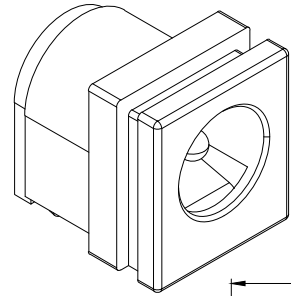
E

D

C

B

A

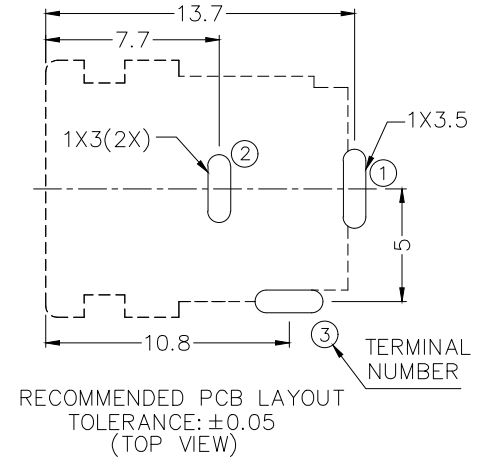
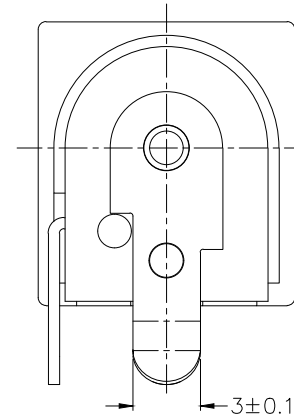
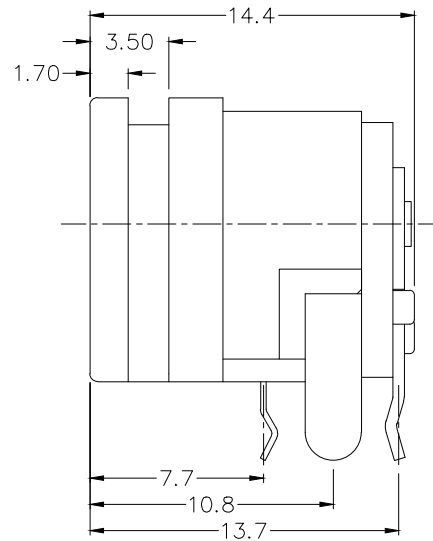
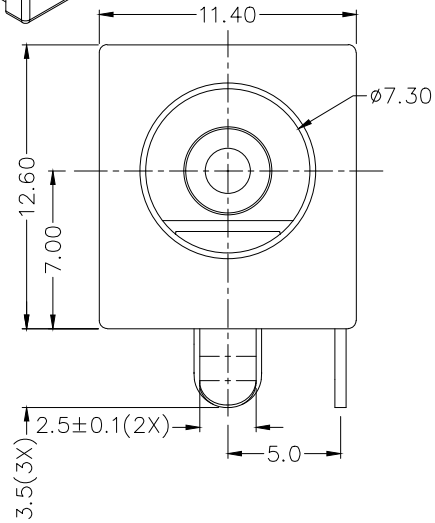


RoHS
Compliant

ZONE	SYMBOL	REVISION	APPROVAL	DATE

1

1

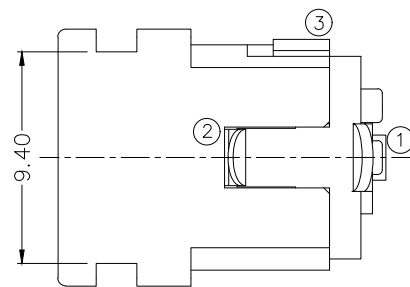


2

2

3

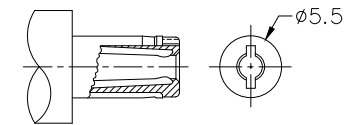
3



* MATERIAL

CENTRE PIN : BRASS
 TERMINAL 1 : BRASS
 TERMINAL 2 : COPPER ALLOY
 TERMINAL 3 : BRASS
 HOUSING : THERMOPLASTIC
 COVER : THERMOPLASTIC

MODEL NO.	LDC-040H-2
SCHMATIC	
CENTER PIN	$\phi 2^{+0}_{-0.1}$ mm
	$\phi 2.5^{+0}_{-0.1}$ mm



RECOMMENDED
DC MATING PLUG

4

4



LINKPLEX TECHNOLOGY LIMITED

DESIGN	T.Y.LI	DATE	11-10-2003	SCALE	3:1
DRAWING	N.X.LIU	DATE	2-11-2016	MATERIAL	*
CHECK	H.L.TAN	DATE	2-11-2016	DWG. NO.	TZ\DC040H-2-B/1.0
APPROVAL		DATE	2-11-2016	SHEET	1/1

PART NAME	HIGH CURRENT DC POWER SOCKET	TOLERANCE UNLESS	0 ± 0.3 0.0 ± 0.25	UNIT:	
PART NO.	LDC-040H-2	OTHERWISE SPECIFIED:	0.00 ± 0.2		

F

E

D

C

B

A