

F

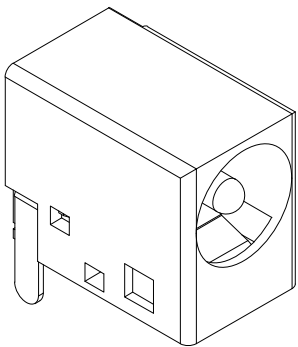
E

D

C

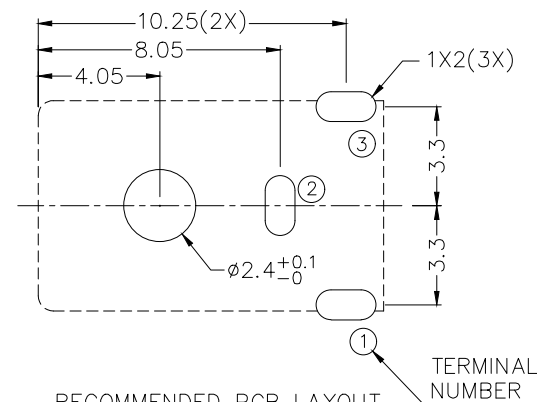
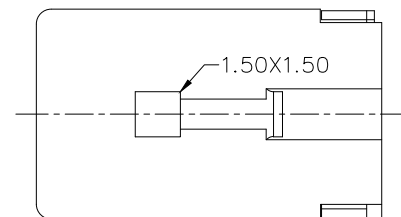
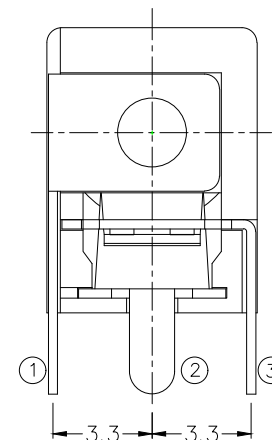
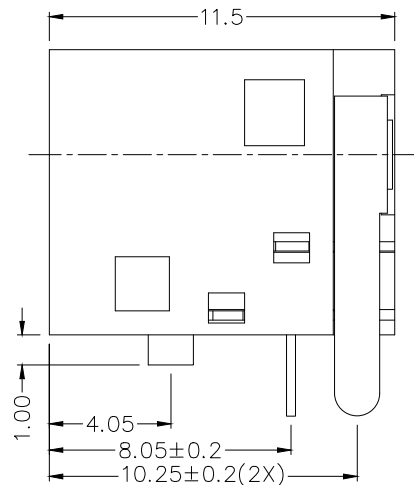
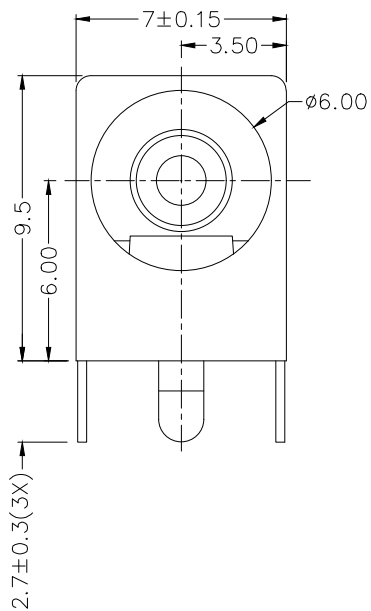
B

A



RoHS  
Compliant

ZONE	SYMBOL	REVISION	APPROVAL	DATE
		ADJUST THE RECOMMENDED DC MATING PLUG	H.Q.ZHOU	10-9-2023



RECOMMENDED PCB LAYOUT  
TOLERANCE: ±0.05  
(TOP VIEW)

TERMINAL  
NUMBER

1

1

2

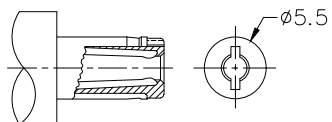
2

3

3

4

4



RECOMMENDED  
DC MATING PLUG

MODEL NO.	LDC-038H
SCHEMATIC	
CENTER PIN	ø1.65mm
	ø2mm
	ø2.5mm

\* MATERIAL

CENTRE PIN : COPPER  
TERMINAL 1 : BRASS  
TERMINAL 2 : COPPER ALLOY  
TERMINAL 3 : BRASS  
HOUSING : THERMOPLASTIC



LINKPLEX TECHNOLOGY LIMITED

DESIGN	L.L.ZHANG	DATE	7-4-2005	SCALE	4:1
DRAWING	J.H.ZHOU	DATE	10-9-2023	MATERIAL	*
CHECK	T.Y.LI	DATE	10-9-2023	DWG. NO.	TZ\DC038H-B/1.1
APPROVAL	H.Q.ZHOU	DATE	10-9-2023	SHEET	1/1

PART NAME	HIGH CURRENT DC POWER SOCKET	TOLERANCE UNLESS	0.0±0.2	UNIT:	mm
PART NO.	LDC-038H	OTHERWISE SPECIFIED:	0.00±0.1 0.000±0.05		

F

E

D

C

B

A