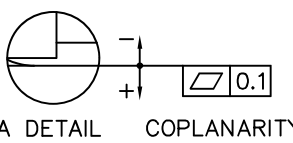
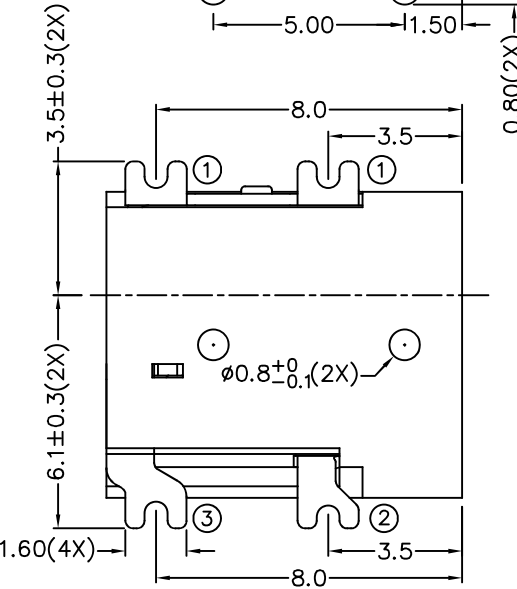
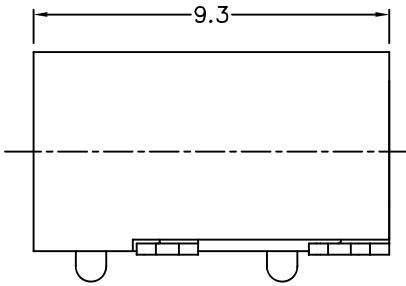
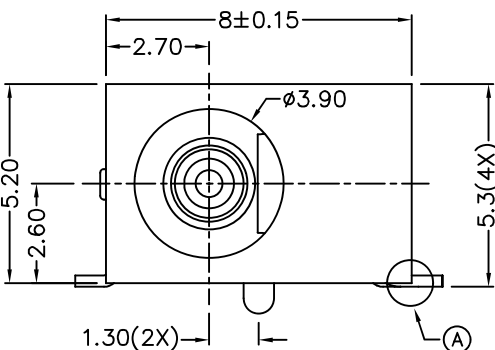
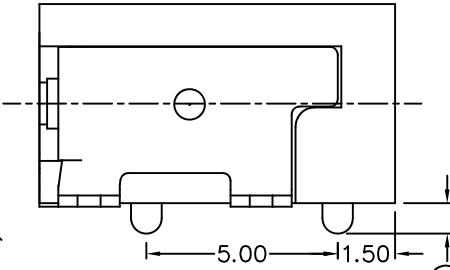


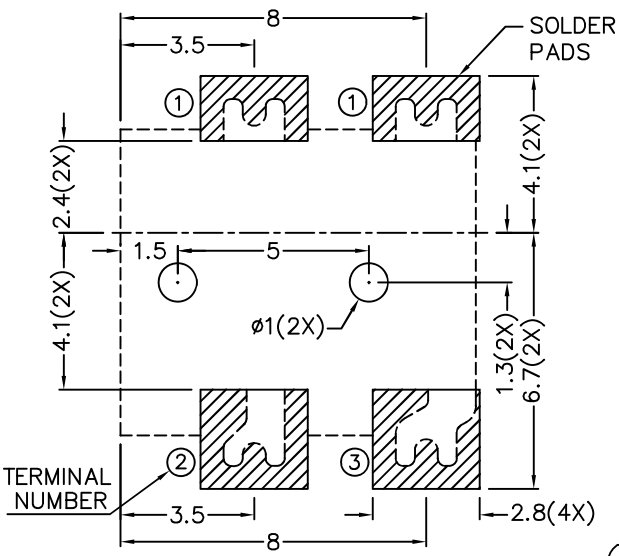
RoHS  
Compliant

ZONE	SYMBOL	REVISION	APPROVAL	DATE

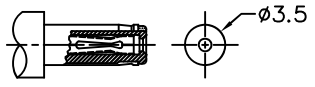


\* MATERIAL:  
 CENTRE PIN : COPPER  
 TERMINAL 1 : BRASS  
 TERMINAL 2 : COPPER ALLOY  
 TERMINAL 3 : BRASS  
 HOUSING : HIGH TEMP. PLASTIC

MODEL NO.	LDC-018H
SCHEMATIC	
CENTER PIN	ø1.000mm
	ø1.300mm



RECOMMENDED PCB LAYOUT  
 TOLERANCE: ±0.05  
 (TOP VIEW)



RECOMMENDED  
 DC MATING PLUG

LINKPLEX TECHNOLOGY LIMITED

DESIGN	L.L.ZHANG	DATE	29-7-2005	SCALE	5:1
DRAWING	N.X.LIU	DATE	9-8-2022	MATERIAL	*
CHECK	T.Y.LI	DATE	9-8-2022	DWG. NO.	TZ\DC018H-A/1.0
APPROVAL		DATE		SHEET	1/1

PART NAME	HIGH CURRENT SMD DC POWER SOCKET	TOLERANCE UNLESS	0.0±0.2	UNIT:	
PART NO.	LDC-018H	OTHERWISE SPECIFIED:	0.00±0.1 0.000±0.05	mm	